

YJ140

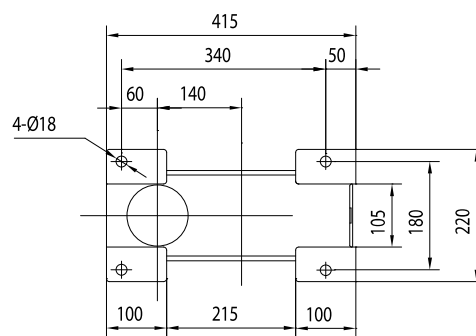
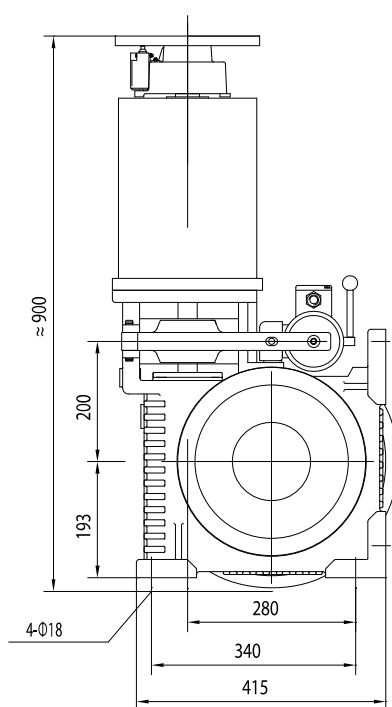
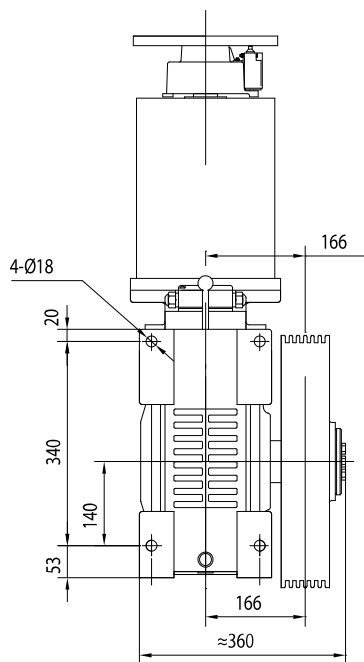
Elevator Traction Machine
Machines de traction ascenseurs



<i>Suspension</i>	1:1	<i>Suspension</i>
<i>Control</i>	VVVF	<i>Contrôle</i>
<i>Brake (DZE-8E)</i>	DC110V 1 A	<i>Frein (DZE-8E)</i>
<i>Weight</i>	285 kg	<i>Poids</i>
<i>Max. Static Load</i>	2 800 kg	<i>Charge stat. maxi.</i>

Horizontal type is optional

Position horizontale possible



The footing hole dimensions of box

<i>Load Charge</i>	<i>Speed Vitesse</i>	<i>Ratio</i>	<i>ø Sheave ø Poulie</i>	<i>Rope sheave Câbles</i>	<i>Power Puissance</i>	<i>Pole</i>
(kg)	(m/s)		(mm)	(mm)	(kW)	
400	0,5	51:1	Ø 340	5XØ8X12	3,5	4
400	0,63	51:1	Ø 425	4XØ10X16	3,5	4
400	1	51:2	Ø 340	5XØ8X12	4,5	4
500	0,5	51:1	Ø 340	6XØ8X12	3,5	4
500	0,63	51:1	Ø 425	4XØ10X16	4,5	4
500	1	51:2	Ø 340	6XØ8X12	5,5	4
500	1,5	41:2	Ø 425	XØ10X16	7,5	4

YJ FYJ

Right sheave type is optional.
Incremental encoder.
Poulie à droite possible
Codeur incrémental.