

YJ110

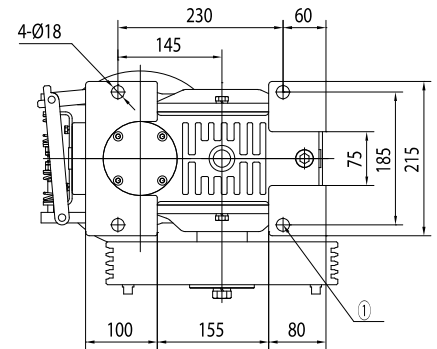
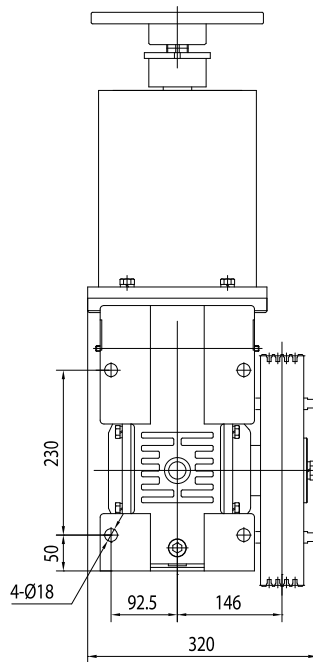
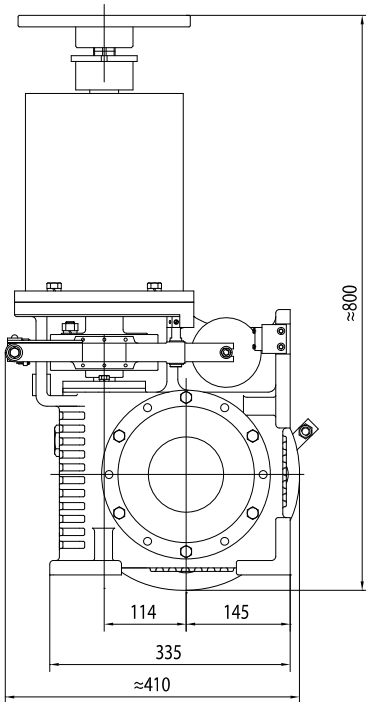
Elevator Traction Machine
Machines de traction ascenseurs



<i>Suspension</i>	1:1	<i>Suspension</i>
<i>Control</i>	VVVF	<i>Contrôle</i>
<i>Brake (DZE-8E)</i>	DC110V 1.4 A	<i>Frein (DZE-8E)</i>
<i>Weight</i>	155 kg	<i>Poids</i>
<i>Max. Static Load</i>	1 800 kg	<i>Charge stat. maxi.</i>

Horizontal type is optional

Position horizontale possible



The footing hole dimensions of box

<i>Load Charge</i>	<i>Speed Vitesse</i>	<i>Ratio</i>	<i>ø Sheave ø Poulie</i>	<i>Rope sheave Câbles</i>	<i>Power Puissance</i>	<i>Pole</i>
(kg)	(m/s)		(mm)	(mm)	(kW)	
100	0,5	45:1	Ø 320	3XØ8X12	1,5	4
100	1,0	45:2	Ø 320	3XØ8X12	1,5	4
200	0,5	45:1	Ø 320	3XØ8X12	1,5	4
200	1,0	45:2	Ø 320	3XØ8X12	2,2	4
320	0,5	45:1	Ø 320	4XØ8X12	2,2	4
320	1,0	45:2	Ø 320	4XØ8X12	3,5	4

Left sheave type is optional.
Incremental encoder.
Poulie à gauche possible
Codeur incrémental.