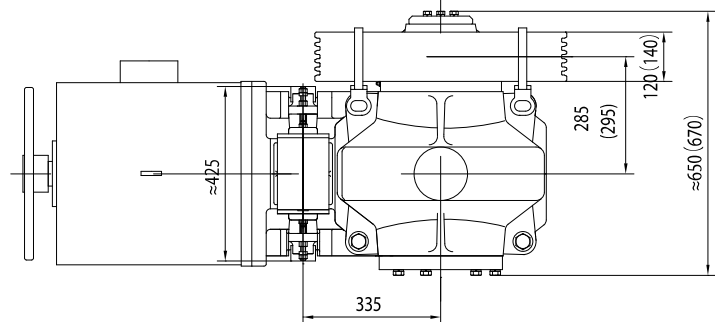
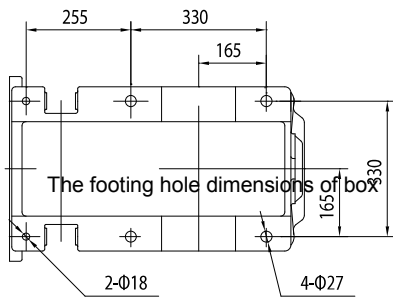
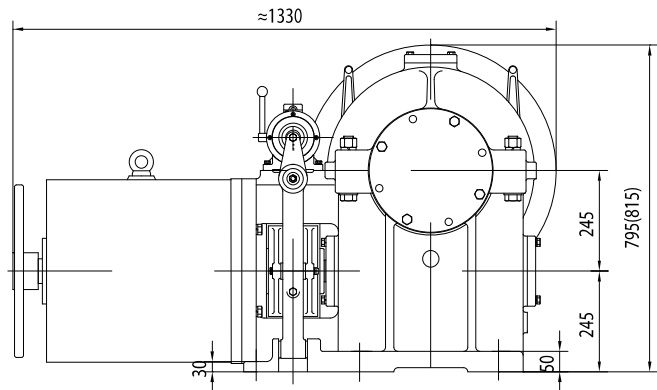


# FYJ245

*Elevator Traction Machine*  
*Machines de traction ascenseurs*



|                  |                   |                    |
|------------------|-------------------|--------------------|
| Suspension       | <b>1:1</b>        | Suspension         |
| Control          | <b>AC2, VVVF</b>  | Contrôle           |
| Brake (DZE-12E)  | <b>DC110V 2 A</b> | Frein (DZE-12E)    |
| Weight           | <b>860 kg</b>     | Poids              |
| Max. Static Load | <b>7 500 kg</b>   | Charge stat. maxi. |



| Load Charge<br>(kg) | Speed Vitesse<br>(m/s) | Ratio | Ø Sheave<br>Ø Poulie<br>(mm) | Rope sheave<br>Câbles<br>(mm) | Power<br>Puissance<br>(kW) | Pole |
|---------------------|------------------------|-------|------------------------------|-------------------------------|----------------------------|------|
| 1150                | 0,5                    | 61:1  | Ø 610                        | 5XØ13X20                      | 7,5                        | 6    |
| 1150                | 0,63                   | 50:1  | Ø 610                        | 5XØ13X20                      | 7,5                        | 6    |
| 1150                | 1,0                    | 61:2  | Ø 610                        | 5XØ13X20                      | 11                         | 6    |
| 1150                | 1,25                   | 49:2  | Ø 610                        | 5XØ13X20                      | 15                         | 6    |
| 1150                | 1,6                    | 61:2  | Ø 650                        | 6XØ13X20                      | 18,5                       | 4    |
| 1150                | 1,75                   | 55:2  | Ø 650                        | 6XØ13X20                      | 18,5                       | 4    |
| 1150                | 2,0                    | 49:2  | Ø 650                        | 6XØ13X20                      | 22                         | 4    |
| 1150                | 0,5                    | 61:1  | Ø 610                        | 5XØ13X20                      | 7,5/1,5                    | 6/24 |
| 1150                | 0,63                   | 50:1  | Ø 610                        | 5XØ13X20                      | 7,5/1,5                    | 6/24 |
| 1150                | 1,0                    | 61:2  | Ø 610                        | 5XØ13X20                      | 11/2,3                     | 6/24 |
| 1150                | 1,25                   | 49:2  | Ø 610                        | 5XØ13X20                      | 15/3,5                     | 6/24 |

Right sheave type is optional.  
The rated load is 2000kg when the suspension is 2:1.  
The dimension in bracket is also applied to 650 sheave.  
Incremental encoder.  
Poulie à droite possible.  
La charge est de 2000 kg avec une suspension 2:1  
Dimension entre parenthèses pour poulie de 650.  
Codeur incrémental.